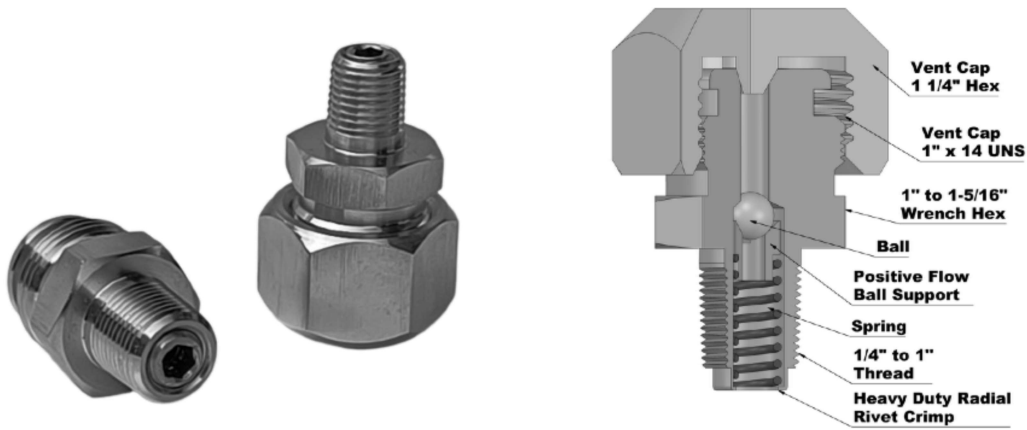
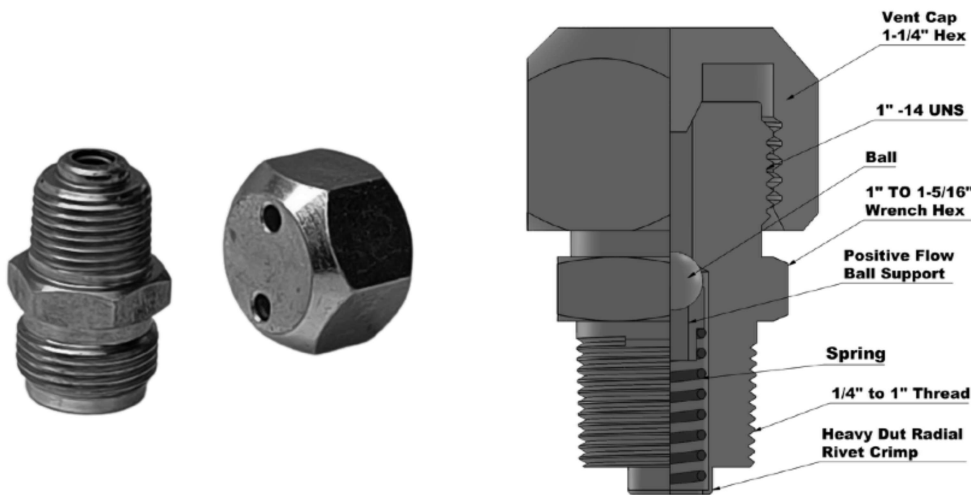


Double Check Fittings (DCF) - Vented Cap Giant Button Head



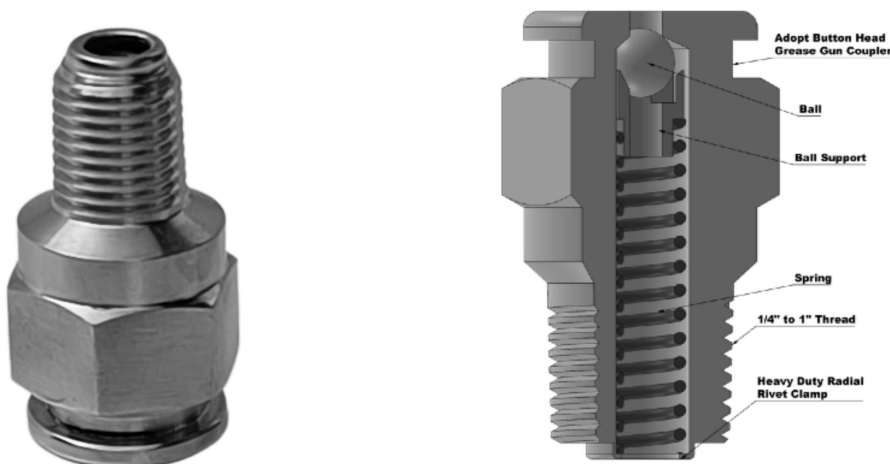
Available in all 1/4", 3/8", 1/2", 3/4" and 1". Working Pressure: 10,000psi

Body Grease Fittings (BGF) - Vented Cap without Giant Button Head



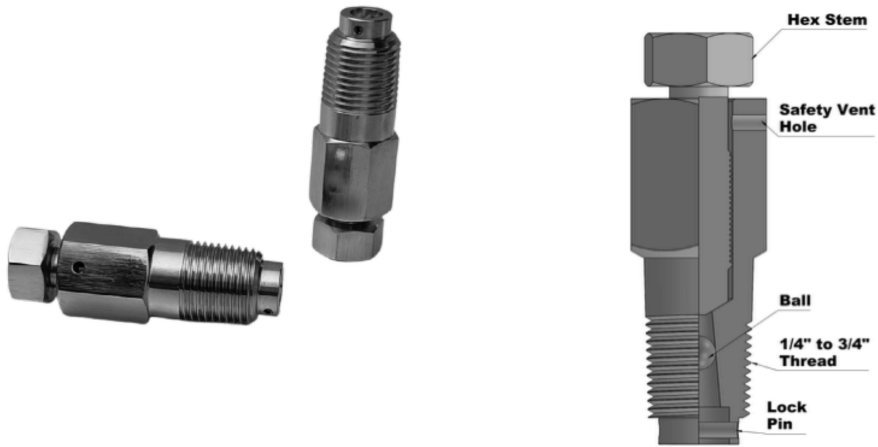
Available in all 1/4", 3/8", 1/2", 3/4" and 1". Working Pressure: 10,000psi

Giant Button Head (GBH)



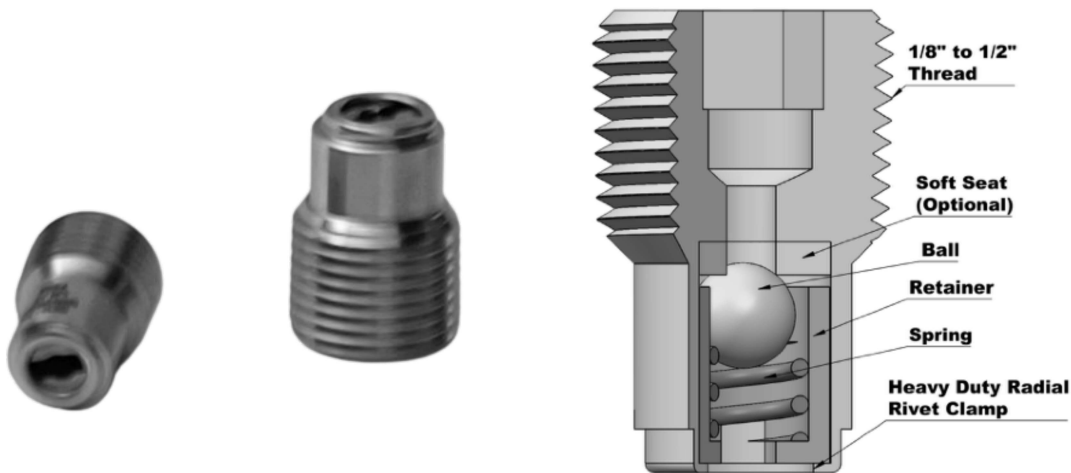
Available in all 1/4", 3/8", 1/2", 3/4" and 1". Working Pressure: 10,000psi

Packing Injection Fittings (PIF)



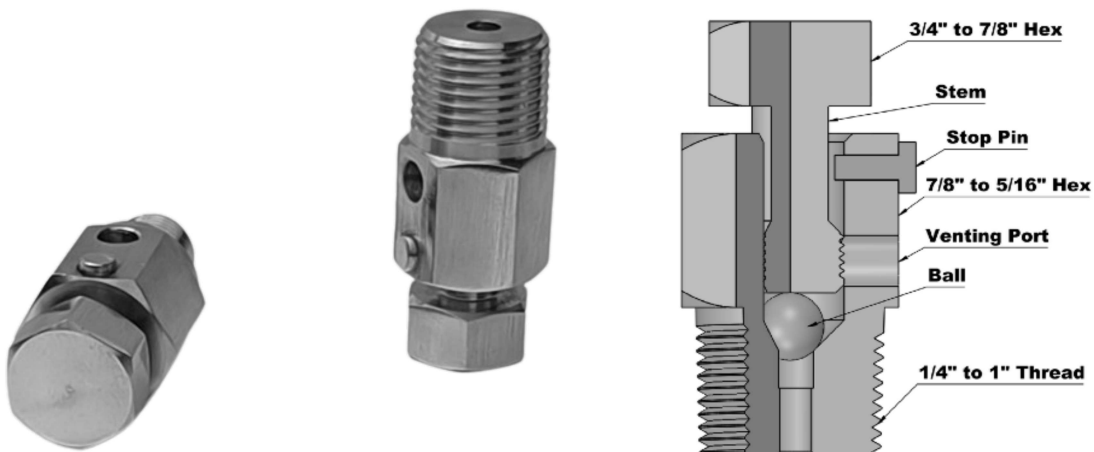
Available in all 1/4", 3/8", 1/2" and 3/4". Working Pressure: 10,000psi

Internal Check Valve (ICV)



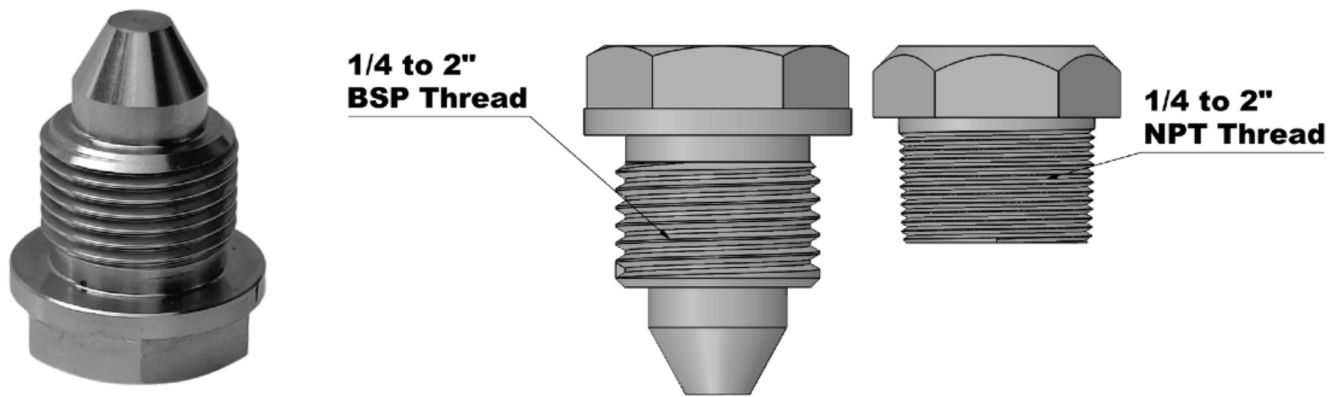
Available in all 1/8", 1/4" and 3/8". Working Pressure: 10,000psi

Body Vent Bleeder Fitting (BLF)



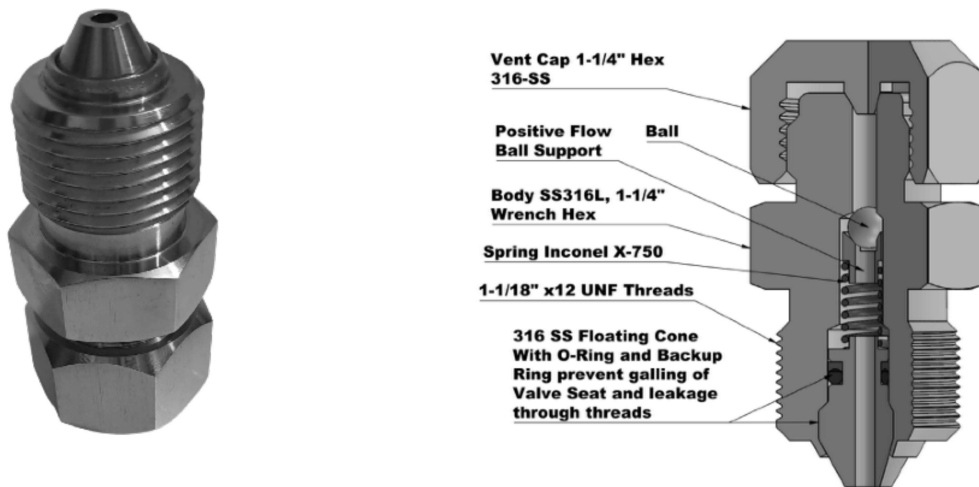
Available in 1/4", 1/2", 3/4", 3/8" and 1". Working Pressure: 10,000psi

Drain Plug (DRP)



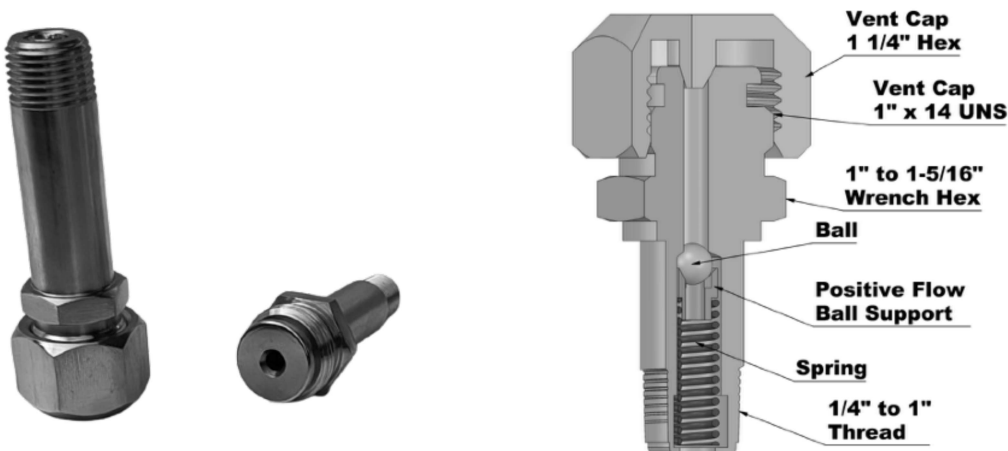
Available in all Sizes. Working Pressure: 10,000psi

Auto Clave Fitting (ACF)



Order Code: ACF-S3-4-U-X-T-M. Working Pressure 20,000psi

Double Check Fitting eXtended Body (DCX)



Available in 1/4", 1/2", 3/8" and 3/4" Sizes. Working Pressure: 10,000psi

How to Order?

Model No. (M)	Body Material (C)	Size (S)	Thread Type (T)	Spring (P)	Ball (B)	Seat (S)
DCF	S3	3	N	X	T	M

Example:

Item Code: DCF-S2-3-N—X-T-M

Description: Double Check Fitting - Body Material SS316L - Size 1/2 Inch - Thread NPT

Spring Inconel X750 - Ball Tungsten Carbide Grade 10 - Seat Metal

Model No. (M)	Details
DCF	Double Check Fitting Vented Cap Giant Button Head
BGF	Body Grease Fitting
GBH	Giant Button Head
PIF	Packing Injection Fitting
ICV	Internal Check Valve
BLF	Bleeder Fitting
DRP	Drain Plug
ACF	Auto Clave Fitting
DCX	Double Check Fitting eXtra Long

Thread Type (T)	Details
N	NPT
B	BSPP
T	BSPT
U	UNF
S	UNS
C	UNC
P	NPSM

Size (S)	Details
0	1/8 Inch
1	1/4 Inch
2	3/8 Inch
3	1/2 Inch
4	9/16 Inch
5	5/8 Inch
6	3/4 Inch
7	7/8 Inch
8	1 Inch

Ball (B)	Details
C	Chrome Alloy
M	K-Monel
S	SS316L
T	Tungsten Carbide Grade 10
N	Not used

Spring (P)	Details
S	SS302
L	SS316
X	Inconel X-750
N	Not used

Seat (S)	Details
M	Metal
S	Soft
N	Not Used

Body Material (C)	Details
C1	1215 (Yellow Zinc Plated)
C2	4140 (Yellow Zinc Plated)
S1	SS304
S2	SS316
S3	SS316L
S4	410
D1	F44
D2	Duplex F51
D3	Duplex F60
D4	Super Duplex F53
D5	Super Duplex F55
M1	Monel K400
M2	Monel K500
N1	Inconel 625
N2	Inconel 718
N3	Inconel 825
H1	Hastelloy C276
17	17-4 PH
13	13-8 Mo